

Lilley & Gillie - Walker Advanced Universal Indicators

DISPLAY GROUPS AND ASSOCIATED DATA	NMEA SENTENCE(s)	LEDs	ANALOGUE DIN 144X96	ANALOGUE DIN144	DIGITAL DIN144X96	DIGITAL DIN144	DIGITAL INDICATOR TEXT LINE	DECIMAL PLACES
WIND								
WIND DIRECTION 0-180-0	MWV	T or R	P308	P312	P316	P329	Direction	-
WIND DIRECTION 0-359 VESSEL	MWD	T	P309	P313			Tr Direction	-
WIND SPEED T & R 0-80kts	MWV	T or R	P305	P310			Speed [kn, mph, m/s]	-
WIND SPEED (True) 0-80kts	MWD	T	P322	P323			Tr speed [kn, mph, m/s]	-
WIND DIRECTION 0-359 LAND	MWV	-	P311	-	-	-		
WIND SPEED 0-80 mph LAND	MWV	-	P306	-	-	-		
WIND SPEED 0-40 m/s LAND	MWV	-	P307	-	-	-		
LOG								
LOG SPEED 0-30 KTS	VBW, VHW	-	P314	-	P317		Speed kn	X
LOG SPEED 0-60 KTS	VBW, VHW	-	P315	-			Set	X
SET & DRIFT	VDR	T	-	-			Drift kn	X
LOG DISTANCE (TYPE APPROVED)	VLW	-	-	-			Total NM	X
REVOLUTIONS	RPM	-	-	-			Trip NM	X
							Propellor rpm	-
WEATHER								
ATMOSPHERIC PRESSURE		-	-	-	P318		Press. mbar	-
ATMOSPHERIC PRESSURE TREND		-	-	-			Press. trend	-
AIR TEMPERATURE		-	-	-			Air Temp °C	X
HUMIDITY		R	-	-			Air Temp °F	-
DEW POINT		-	-	-			Humidity %	-
WATER TEMPERATURE	MTW	-	-	-			Dew Point °C	X
WATER SALINITY		-	-	-			Dew Point °F	-
							Sea Temp °C	X
							Sea Temp °F	-
							Salinity	-
NAUTICAL								
CLINOMETER 45-0-45		-	-	P330	P319		Heel Angle	X
CLINOMETER 5-0-5		-	-	P331			Trim Angle	-
CLOCK	ZDA	-	-	-			Time UTC	-
							Time SHIP	-
DEPTH	DPT,DBT	-	-	-			Time CHRONO	-
							Depth mtr	X
							Depth fm	-
SHIP'S HEAD								
RUDDER ANGLE	RSA	-	P333	P334	P320		Rudder Angle	-
HEADING COMPASS/ MAGNETIC/TRUE	HDG, HDT	T					Comp Heading	-
							Mag Heading	-
							Heading	-
							Magnetic var	X
							Magnetic dev	X
							ROT °/s	X
NAV								
(FUTURE DESIGNS XTE, SOG, COG, ETC.)		-	-	-	-	-	-	-



Manufacturer of magnetic compasses, TMC's and nautical instruments. Adjusting, testing and repair of magnetic compasses by certificated compass adjusters.



Manufacture of military grade instrumentation systems for naval and paramilitary vessels.



International Admiralty Chart Agent Supply and updating services for BA, US, Primar and numerous other publishers' charts, publications and books including electronic charts (Raster and S57) and digitised products.



UK sales and service of Yokogawa gyros, autopilots and logs.



Distribution of lighting products including navigation lights, navigation light switch panels and searchlights.



UK sales of specialised Avecs software including emergency control, planned maintenance, quality document management and others.



Manufacture of type approved navigation and data instrumentation for commercial vessels.



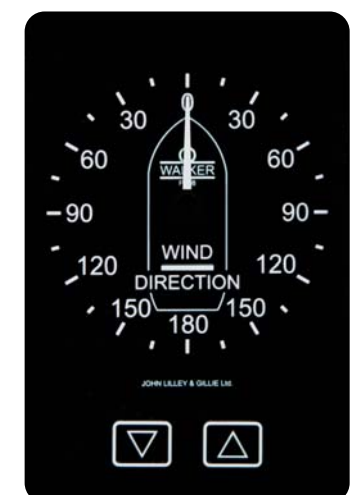
ECDIS and electronic chart systems

John Lilley & Gillie Ltd.,
Clive Street, North Shields, Tyne & Wear. NE29 6LF. England.
Tel: +44(0)191 257 2217
Fax: +44(0)191 257 1521
E-Mail: sales@lilleyandgillie.co.uk
Web: www.lilleyandgillie.co.uk

LILLEY & GILLIE
Directing International Shipping since 1812

Lilley & Gillie Walker Advanced Universal Indicators

A RANGE OF MATCHING INDICATORS FOR ALL COMMERCIAL VESSELS IN TWO DIN STANDARD SIZES TO SUIT A WIDE VARIETY OF APPLICATIONS



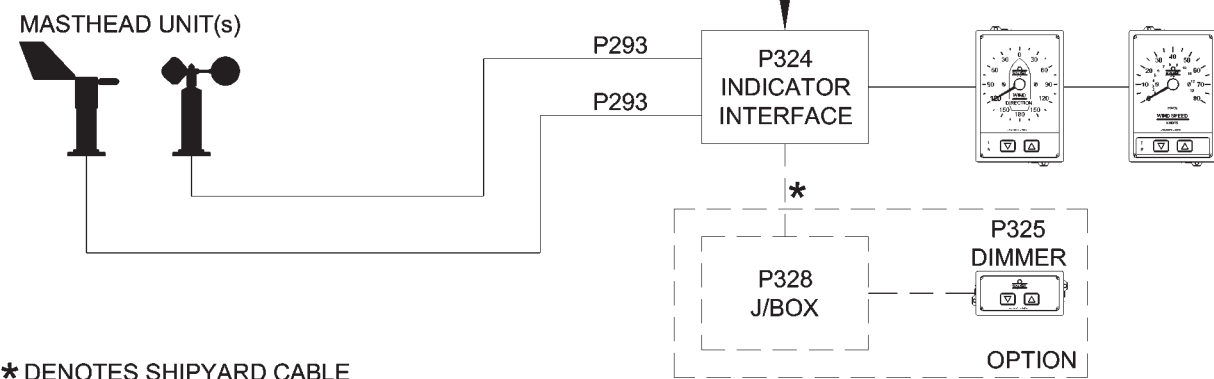
- Wind, weather, log, clinometer, clock, rudder angle and heading
- Analogue and digital versions
- No calibration necessary
- Solid state principles with NMEA 0183 input and outputs
- Simple installation - plug and socket connectors
- Sensor input failure alarm and power loss relay contact
- Analogue versions have four times the expected life of traditional moving coil type

Complies with current IMO, ISO and IEC requirements and recommendations

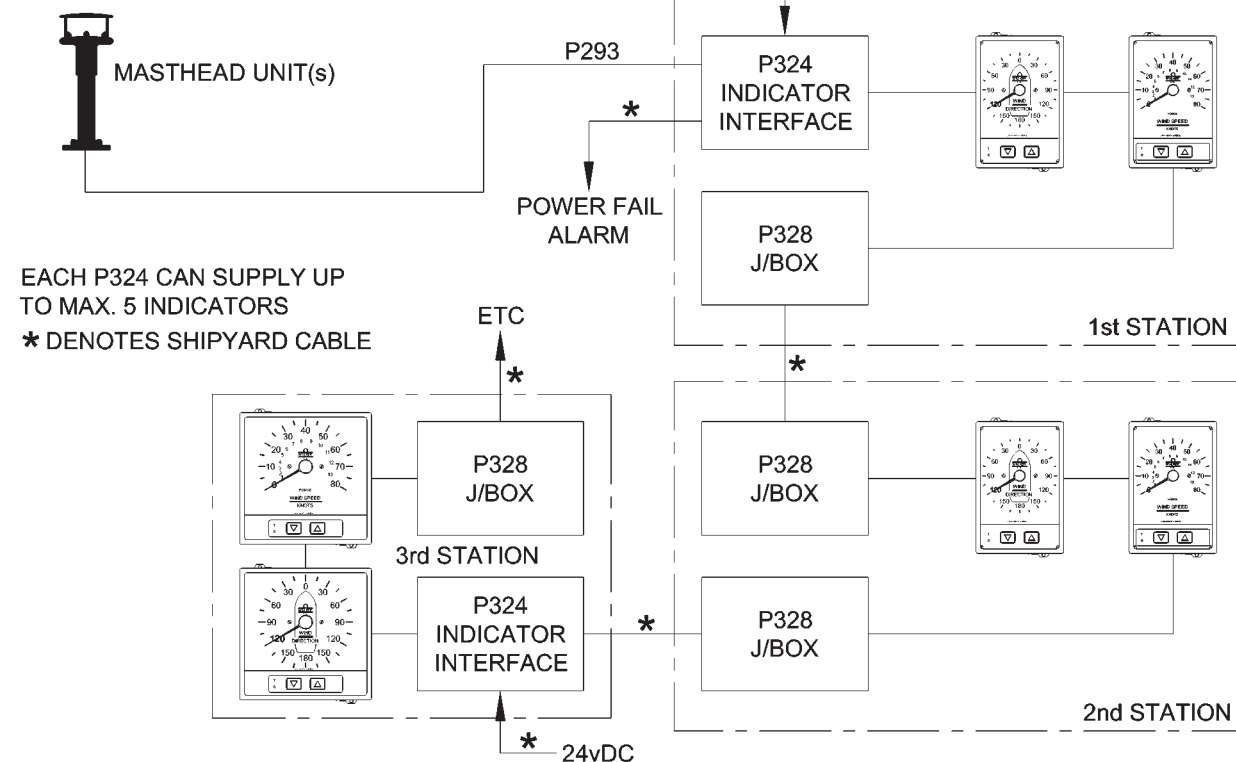


LILLEY & GILLIE
Directing International Shipping since 1812

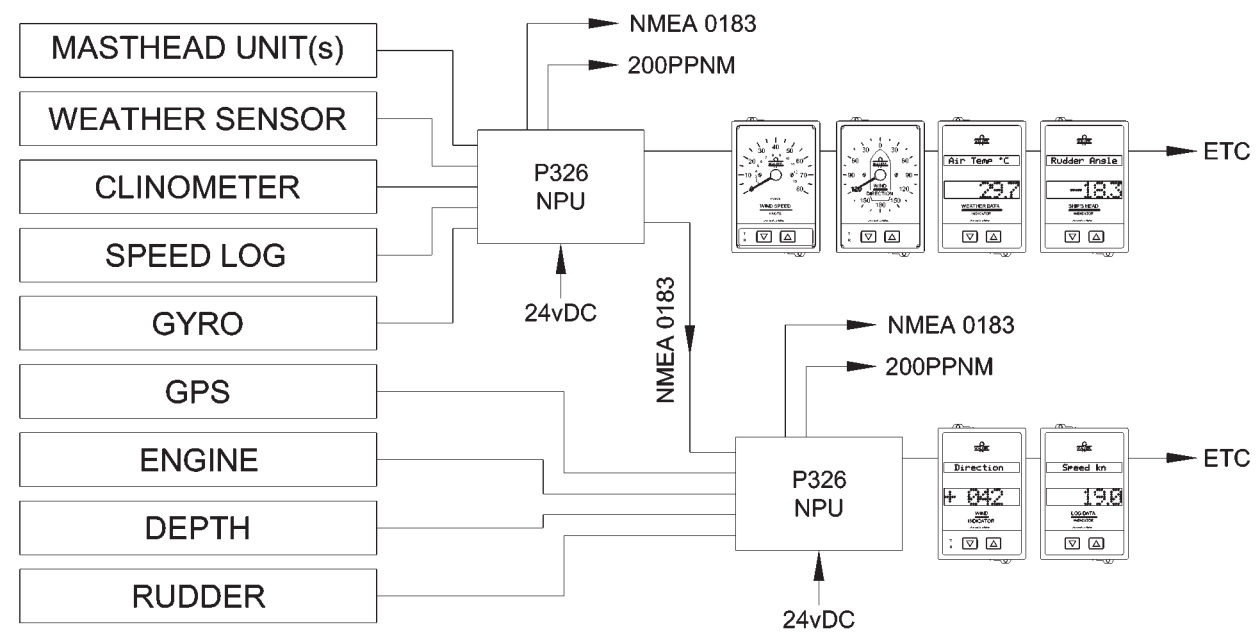
SIMPLE WIND INSTALLATION



MULTI-INDICATOR SYSTEM



MULTI-SENSOR / INDICATOR SYSTEM



Lilley & Gillie - Walker Advanced Universal Indicators

Analogue Dial Options



P305 WIND SPEED (T&R) KNOTS



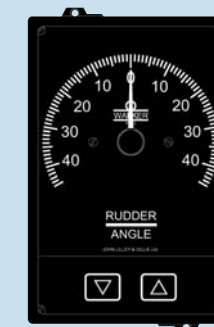
P306 WIND SPEED (LAND) MPH



P307 WIND SPEED (LAND) M/SEC



P322 WIND SPEED (T) KNOTS



P333 RUDDER ANGLE



P308 WIND DIRECTION (T&R)



P309 WIND DIRECTION (T)



P311 WIND DIRECTION (LAND)



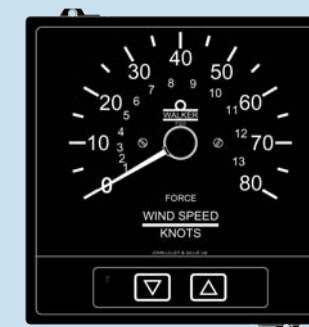
P314 LOG SPEED KNOTS



P315 LOG SPEED KNOTS



P310 WIND SPEED (T&R) KNOTS



P323 WIND SPEED (T) KNOTS



P312 WIND DIRECTION (T&R)



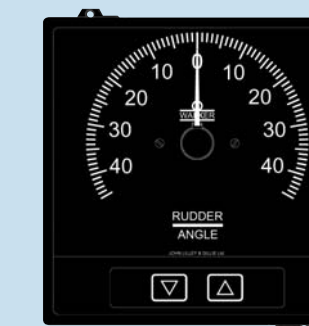
P313 WIND DIRECTION (T)



P330 CLINOMETER 45° - 0° - 45°



P331 CLINOMETER 5° - 0° - 5°



P334 RUDDER ANGLE