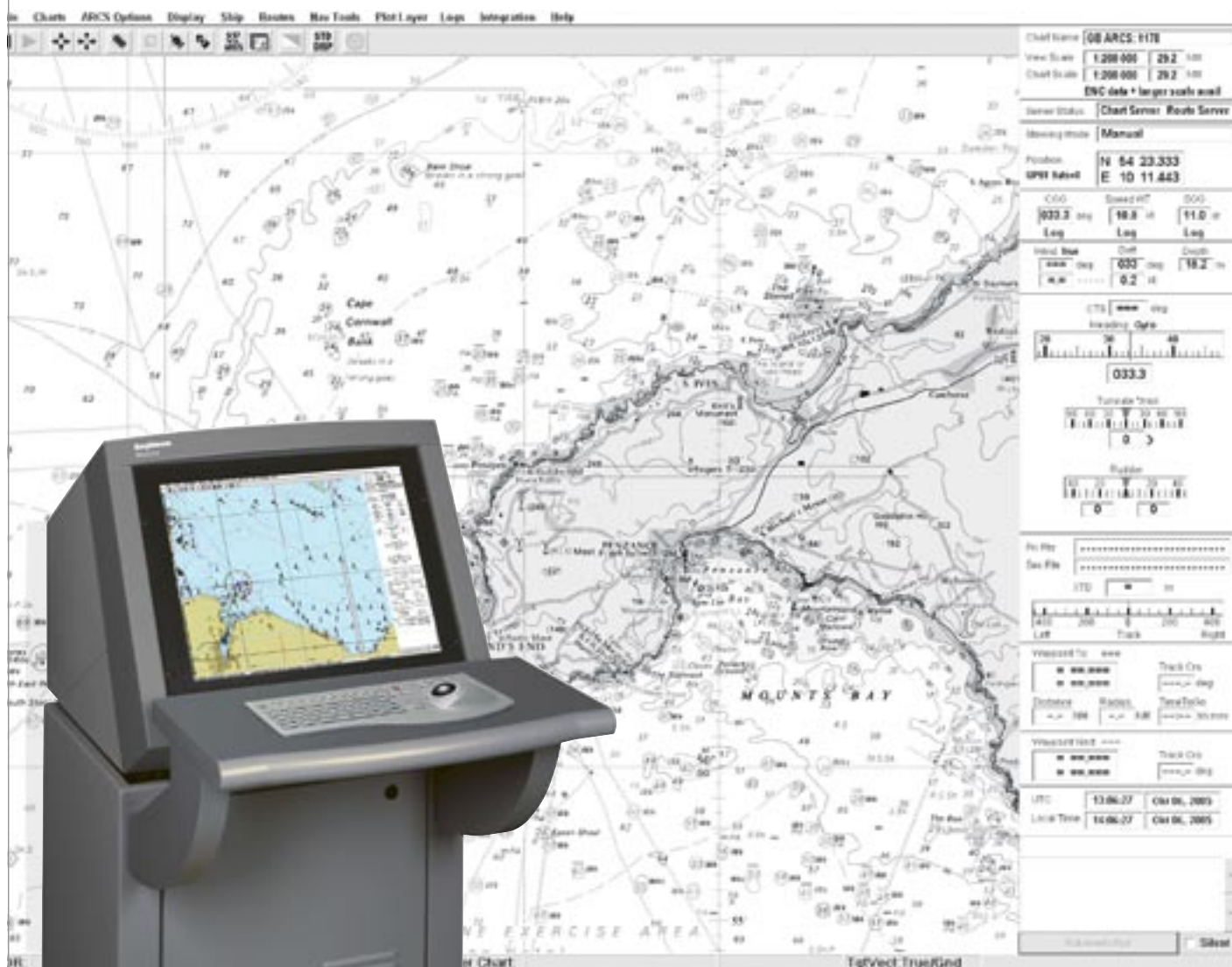


Electronic Chart Display and Information System

Pathfinder®/ST MK2 ECDIS



Electronic Chart Display and Information System

Pathfinder®/ST MK2 ECDIS

Extensive assistance – With its Pathfinder®/ST MK2 Raytheon presents a high performance ECDIS which provides the base for paperless navigation and effectively supports the operator in manoeuvring.

Comfortable server functionalities and the interaction with NSC Radar and adaptive autopilot series NP 20X5 makes the Pathfinder®/ST MK2 ECDIS an integral component of Raytheon's bridge concept.

In addition to IHO/IMO compliant vector Electronic Navigation Charts (ENC), the MK2 ECDIS also displays raster charts (ARCS).

The Pathfinder® / ST MK2 ECDIS complies to latest requirements such as IEC/EN 61174 (Performance Standards for ECDIS), IEC/EN 61162-1, IEC/EN 60945, MED 96/998/EC (Wheelmark) and other relevant standards of IMO, IHO and IEC.

Our worldwide sales and service network provides product and service support wherever needed.



★ More than 200 Service Stations all around the world

Optional: Radar Image Overlay



Worldwide chart coverage

C-Map:
CM 93/3
CM-ENC

IHO:
ENC
IHO-S63 (encrypted)

ARCS

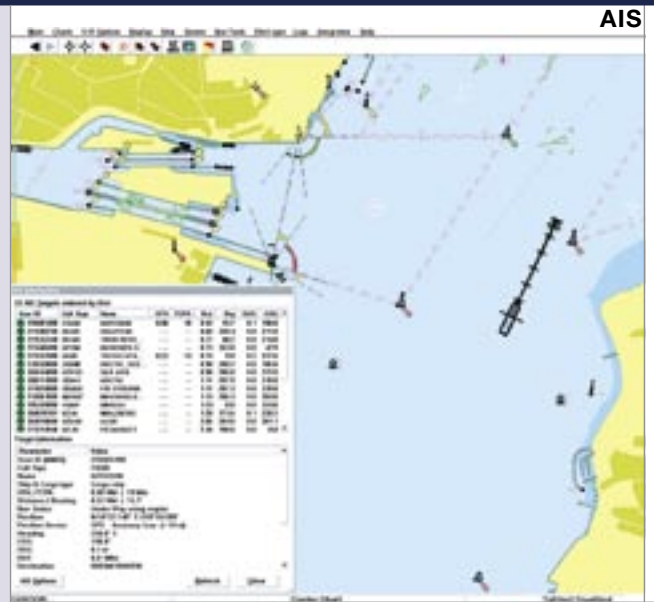
DNC

Functions

- Automatic Selection of navigational charts relative to position with both ENC and ARCS charts
- Radar image overlay (option)
- Chart Server / Route Server: Automatic sharing of charts, updates and routes when the configuration contains more than one ECDIS
- Display of AIS targets: AIS targets are displayed (with vectors for heading and speed), additional target data are available by cursor click on a target
- Route planning and route monitoring
- Recording and output of relevant voyage information (black-box function) in accordance to IMO Performance Standard
- Display of radar information (tracked ARPA targets)
- Online help available to support the operator at work
- Available as Desktop, Table Top or Blackbox version – for stand alone installation, installation at top of a console or integration into a customer's console.
- AIS-Server function

Track control in conjunction with autopilot series NP 20X5 in accordance with IEC 62065

- Route planning and graphical display
- Display of track data information
- Graphic display of heading change manoeuvres
- Optional Autopilot Remote Control Panel:
 - Remote control of Autopilot
 - Autopilot override



System Integration

The Pathfinder®/ST MK2 ECDIS interfaces to many existing bridge systems and navigation equipment. It can be configured for integration with ARPA Radar, autopilot, AIS; echo sounder, speed log, wind speed direction sensor, position receivers and engine rpm sensors. Thus the MK2 ECDIS is able to display navigational sensor data and corresponding alarms.

By interfacing with Raytheon's radar NSC electronic chart layers can be transferred to the radar display.

