

super

# yacht

by **Raytheon** Marine





super

# yacht

**What counts at sea: reliability and performance. Because nobody knows exactly how the weather will develop and what situations a yacht will get into on the open seas, you should rely on only the best systems on board.**

For many decades Raytheon Marine has been building professional navigation systems, with great success. Thousands of ships, Megayachts, Coasters, Aircraft Carriers or Supertankers are navigating with Anschutz gyrocompasses, Autopilots or Raytheon Radars. We always insist on highest standards of quality. Systems for professional use from one of the leading manufacturers of integrated navigation systems, supported by the biggest sales and service network in the marine industry to provide you with utmost safety. Turnkey solutions including equipment, consoles, project engineering, factory acceptance test, supervision of installation, commissioning and crew training.

Highest quality, full safety and maximum support - everything you need to enjoy your life at sea.

*Enjoy your life at sea*

# Full control at your fingertips...

## *BridgeControl*<sup>®</sup>

↳ **The Raytheon Marine Integrated Bridge System BridgeControl is based on revolutionary designs which set new standards for functionality, operation and ergonomics.**

Maximum flexibility is given for the bridge designs and layouts because Radars, ECDIS and Conning systems can be provided as so called “black box systems” and all operating panels can be provided in several different colours.



## *NautoSteer®*

The variety of devices required for navigation and monitoring in the bridge area necessitates a functional design meeting work sequence-oriented and ergonomic demands.

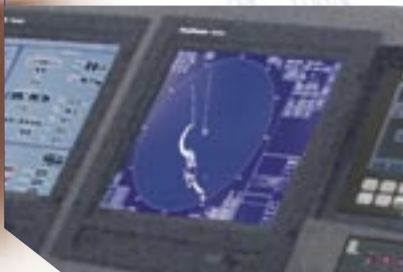
All requirements for individual fitting of modern ships, from the smallest to the largest, can be economically met by Anschutz NautoSteer®.

## *Navigation ARPA Radar System NSC*

The new NSC Navigational Radar represents the latest state-of-the-art technology and offers everything you can expect from a modern IMO ARPA-Radar. Based on Raytheon's more than half a century experience in radar development, NSC Navigational Radar is a high performance product with unmatched capabilities and performance.

## *ECDIS*

Raytheon Marine's ECDIS completes any bridge perfectly and can be configured to integrate with Radar, Autopilot and all main sensors. It is a fully IMO compliant and type approved ECDIS that can read vector charts as well as raster charts (ARCS). Together with an Anschutz Trackpilot it forms an Automatic Navigation Track-keeping System (ANTS) providing excellent steering accuracy.



## *Anschütz Autopilots*

No matter which Autopilot you choose, Nautopilot 20X5 series, Pilotstar D or NP 60: Our Autopilots make perfect course- and track keeping possible even at very low or very high speeds.

## *Anschütz Digital Gyro STD 22*

The new Gyro Compass Standard 22 Compact has an unparalleled accuracy of 0.1 degree and offers best performance up to a speed of 70 knots.

## *Satellite Compass STD 21*

The new Anschütz Satellite Compass uses GPS signals to produce ship's heading information. It can be used as a compass Sensor for repeaters, radars, electronic chart systems, AIS, scanning sonars, and TV-antennas.

## *GMDSS A3 Station*

The Raytheon Marine GMDSS A3 Station combines all components required for GMDSS communications - completely prewired in a table top console or as single components for individual integration on your bridge.



# Raytheon Marine

## Raytheon Marine GmbH

High Seas Products

Postfach 1166

D-24100 Kiel, Germany

Tel +49 (0)431-30 19-0

Fax +49 (0)431-30 19-291

Email [sales@raykiel.com](mailto:sales@raykiel.com)



[www.raytheon-marine.de](http://www.raytheon-marine.de)